

Domestic Lady's Dressmaker- Edwardian 1900-1909 Black Print Mother Hubbard Wrapper



This wrapper is unlined cotton print. I am dating it to the early 1900's rather than the 1890's because of the long length of the shoulder- which is more common in the Edwardian period than the late Victorian. The dress is nearly completely machine sewn, with the exception of the hem and some hand stitches that close the front of the gown further up than originally. The collar is a simple narrow strip (3/4" inch) of fabric folded at the top and topstitched onto the neckline covering the neckline seam. There are only two small Mother of Pearl shirt buttons closing this dress.



Of note is the fact that the back yoke which is the only lined part seems to have sandwiched the back gathered piece between the yoke and the yoke lining, which were then pressed up and topstitched on the outer edge.

120" hem

47" neck to hem front

collar $\frac{3}{4}$ " wide

cuffs $1\frac{5}{8}$ " wide

53" neck to hem back



collar straight piece top stitched on



Back Yoke lined with coarse muslin/feedsack
two MOP $\frac{3}{8}$ " 2 hole buttons

2 inch hem

Yoke front and back
underarm piece

back yoke sandwiches back skirt between muslin and yoke so raw edges are covered



open 14" down front
bottom of opening overlapped and topstitched together. It appears that was open further down at one time but was whipped closed the last 10 inches
mostly machine sewn

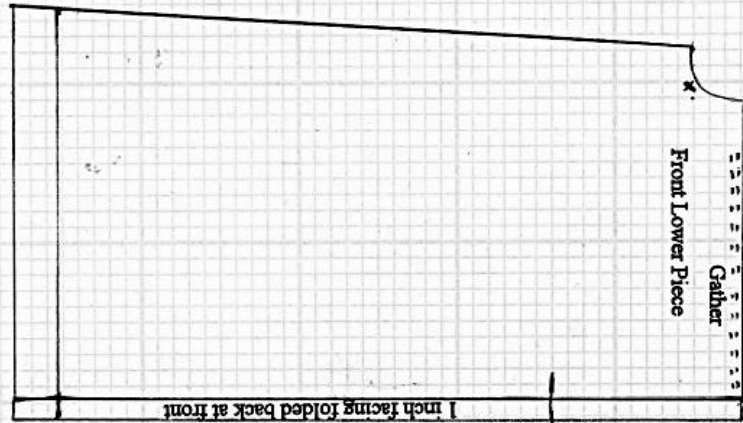
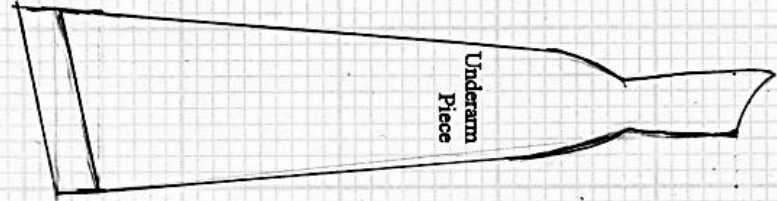
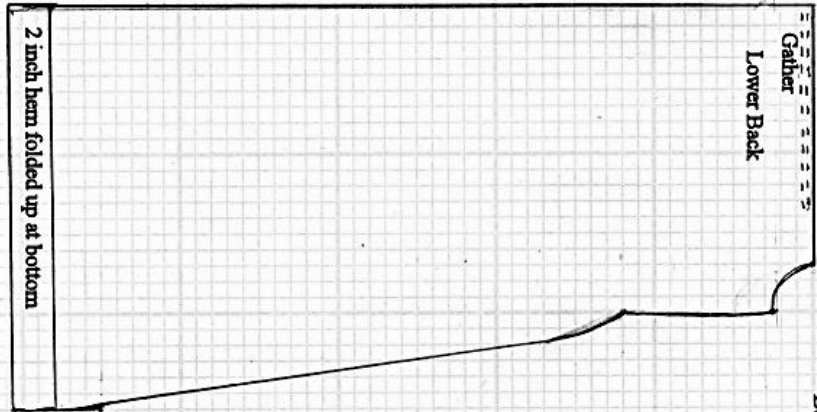
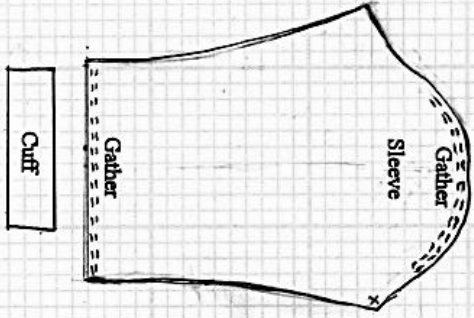
Edwardian Mother Hubbard

Black cotton print,
Unlined except for back yoke
Back yoke lined in floursack or coarse muslin

Collar

Back Yoke

Front Yoke



Grid is 1 square to 1 inch

Seam allowances are not included but hem width is included

Copyright Marna Jean Davis 2015- please do not reprint without permission- "The Domestic Lady's Dressmaker"